

WIN! A LUXURY SHOWER PACKAGE, HAMPERS, DAYS OUT, RUGS & LOTS MORE

GO ONLINE
WWW.YHMAG.CO.UK

Your Home

HUNDREDS OF GREAT-VALUE IDEAS FOR EVERY ROOM

FEBRUARY 2010

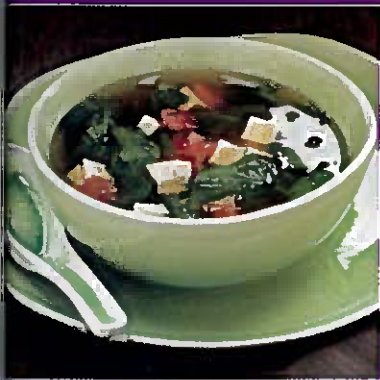
ONLY
£1.99

Brilliant READER HOMES & MAKEOVERS

- * Modern two-bed maisonette
- * Space-savvy family home
- * Elegant Edwardian semi
- * Cosy terraced cottage



0 WAYS TO ADD MORE SPACE TO YOUR HOME



CELEBRATE CHINESE NEW YEAR WITH KEN HOM



CREATIVE CRAFTS AND SIMPLE SEWING PROJECTS



547 affordable ideas
FOR STYLE ON A SHOESTRING



WIN!
£8,500
WORTH OF PRIZES

THE MONEY-SAVING ISSUE

- ✓ Budget buys for your home from just £1
- ✓ Discover how to save cash every month
- ✓ Bargain kitchen and bathroom updates
- ✓ We test the best low cost food ranges



Better planning gave my



INSIDER INFO

WHO LIVES HERE?

Jayne Bartlett, 35, a journalist and her cat, Fred, live in a two-bedroom semi-detached cottage in Hampshire. She bought the property in 2007.

WHAT DO YOU LIKE MOST ABOUT THE ROOM?

'I love the sense of light and space that the new worktops have created. Also, by moving the position of the oven and hob from the side to the end of the room, I now have an uninterrupted run of work surface, which is great for prepping and doing paperwork on!'

WHAT ARE YOUR TOP TIPS FOR PLANNING A NEW KITCHEN?

'I had this done during the summer, which made it easier for the fitter to do bits of carpentry out in the garden. It also helps if you can be around at the later stages of the installation for any last-minute decisions.'

WHAT DID YOU LEARN DURING THIS PROJECT?

'I always thought I was a control freak, but I learnt that I can hand over the reins to the professionals when I have to, and it was quite nice to let someone else take the stress for a change.'

Changing the position of the oven and hob enabled Jayne Bartlett to create an easy-to-use kitchen with plenty of room for storage



WHAT WAS WRONG WITH THE OLD ROOM?

The kitchen had fake beams on the ceiling, broken units and poorly planned appliances. It also felt really dated and cluttered.



OPT FOR HANDLE-LESS UNITS

The oak-effect units are from Crown Imperial's Horizon range and instead of traditional handles, they have a stylish integrated handle design that gives the kitchen a clutter-free look, which enhances the feeling of space.

kitchen the feeling of space

PICK A PRACTICAL SPLASHBACK

Jayne was concerned that a tiled splashback behind the hob could be tricky to clean, so she chose a bold blue glass version that simply needs a quick wipe after cooking.

When Jayne Bartlett moved into her pretty 19th century cottage a few years ago, she felt sure that the existing kitchen would do, but after a couple of years the old-fashioned units and poorly laid out appliances started to become a problem. 'It's only after you've used a kitchen for a while that you work out what needs to be done differently,' advises Jayne. 'I always knew it looked a bit dated but, because it's an old house, I thought the old-fashioned cupboards suited it. It took me a few years to realise that I could create a better space.'

Jayne completely gutted the room, removing the fake beams and replastering the walls and ceiling. 'I wanted a really fresh, clean look,' she adds. 'So I painted everything in white, which really opened up the room.' Jayne chose contemporary oak-effect units with an integrated handle and topped them with chunky white stone worksurfaces. 'I love the worktops,' says Jayne. 'I couldn't afford Corian, so I used Bushboard's Encore range, which gives a similar look for a lot less.'

One element that has transformed the way Jayne uses the kitchen is the new position of the oven, hob and extractor. 'The old appliances used to be on the right hand side,' she explains. 'But installing a new kitchen gave me the perfect opportunity to move them to the end of the U-shaped room, which has freed up a whole stretch of worktop and gives a sense of balance, too.'

Splashes of colour are introduced with a bold blue splashback and floral window blind. 'I love the fact that I have this cosy old cottage with a surprisingly modern kitchen,' smiles Jayne. 'Even though it's small, it functions perfectly well and I really enjoy spending time in here. It has even encouraged me to become more creative with my cooking!'

CHOOSE SLIMLINE ACCESSORIES

When selecting the finishing touches for her kitchen, Jayne was careful to pick products that worked well in the small space. The Brabantia touch bin is a slender 30 litre model that sits snugly next to the units.



ADD 'WOW' FACTOR WITH A BLIND

As the walls and worktops were going to be white, Jayne knew that she had to inject a splash of colour and personality elsewhere. She opted for an eye-catching window blind from Eclectics, which has a pretty flower design to co-ordinate with the splashbacks.

OPEN UP A SMALL SPACE WITH WHITE

Jayne chose Bushboard's Encore range of solid surface worktops, which have a chunky stone look. Bright red accessories are the perfect contrast.

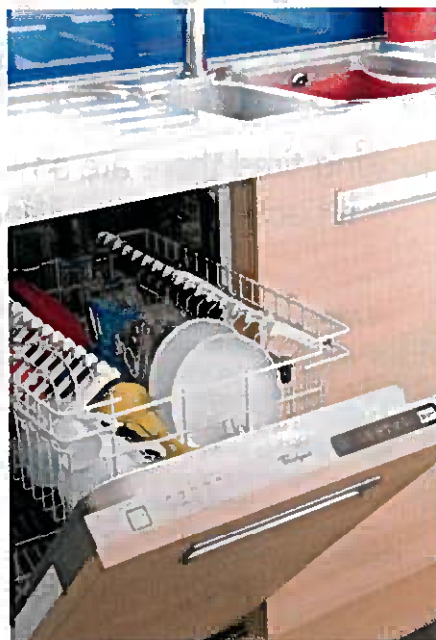
CONSIDER INTEGRATED APPLIANCES

Jayne was thrilled with her slimline dishwasher, as she's never owned one before. An integrated model is the perfect solution for a small space as it's hidden behind a door.



USE EVERY INCH OF SPACE

Jayne could have used wirework pull-outs either side of the oven, but that would have pushed her budget up. So she chose neat open shelving, which is perfect for keeping her cookery books close to hand.



Shopping list

Horizon units in Kristal oak effect, £134 per 600mm base unit; Crown Imperial. Encore solid surface worktops in Glacier, £125 per linear metre; Bushboard. Blue glass splashback, £200 per sq m; ABC Glass. Cavallo Ceramica vinyl floor tiles in Volcanic Ash, £27.95 per sq m; Waterlooville Carpets. Belling XOU60MF built-in single oven, £353; Whirlpool ADG550 dishwasher, £487, both Appliances Online. Whirlpool AKR524 chimney hood, £397, Jual Domestic. De Dietrich DTI714V induction hob, £389, John Lewis. Isis 150 stainless steel sink, £294.60; Reno chrome tap, £150.72, both Carron Phoenix. Pure Brilliant White matt emulsion, £10.99 per 2.5l; Crown. Roller blind in Retro Flower Teal, £300, Eclectics. 30-litre touch bin in matt black, £92, Brabantia. Nigella Lawson melamine mixing bowls, £41.50 for four, BlissHome. Steel bread bin, £30, Joseph Joseph. Dualit toaster, £113; red rubber washing-up bowl, £47; Sagaform oven mitt, £9; Typhoon Pantone tea towels, £13 for three; Typhoon capsule storage canisters, from £9, all Red Candy.

Total cost
£6,239